

Standalone Scheduler Property File Creation  
Oracle FLEXCUBE Universal Banking  
Release 14.4.0.2.0  
[November] [2020]



---

# Table of Contents

- 1. CREATING PROPERTY FILE FOR STANDALONE SCHEDULER..... 1-1**
  - 1.1 INTRODUCTION 1-1
  - 1.2 CREATING PROPERTY FILE 1-1
    - 1.2.1 *Setting General Properties* ..... 1-5
    - 1.2.2 *Single Sign on* ..... 1-7
    - 1.2.3 *SMTPS Details*..... 1-8
    - 1.2.4 *Configuring Scheduler Queues* ..... 1-9
    - 1.2.5 *Setting EMS FTP/FTPS Properties* ..... 1-15
    - 1.2.6 *Setting BIP/GI Upload Queue* ..... 1-16
    - 1.2.7 *Setting Report Properties*..... 1-18
    - 1.2.8 *Setting ELCM Properties*..... 1-21
    - 1.2.9 *Saving Property File*..... 1-22

# 1. Creating Property File for Standalone scheduler

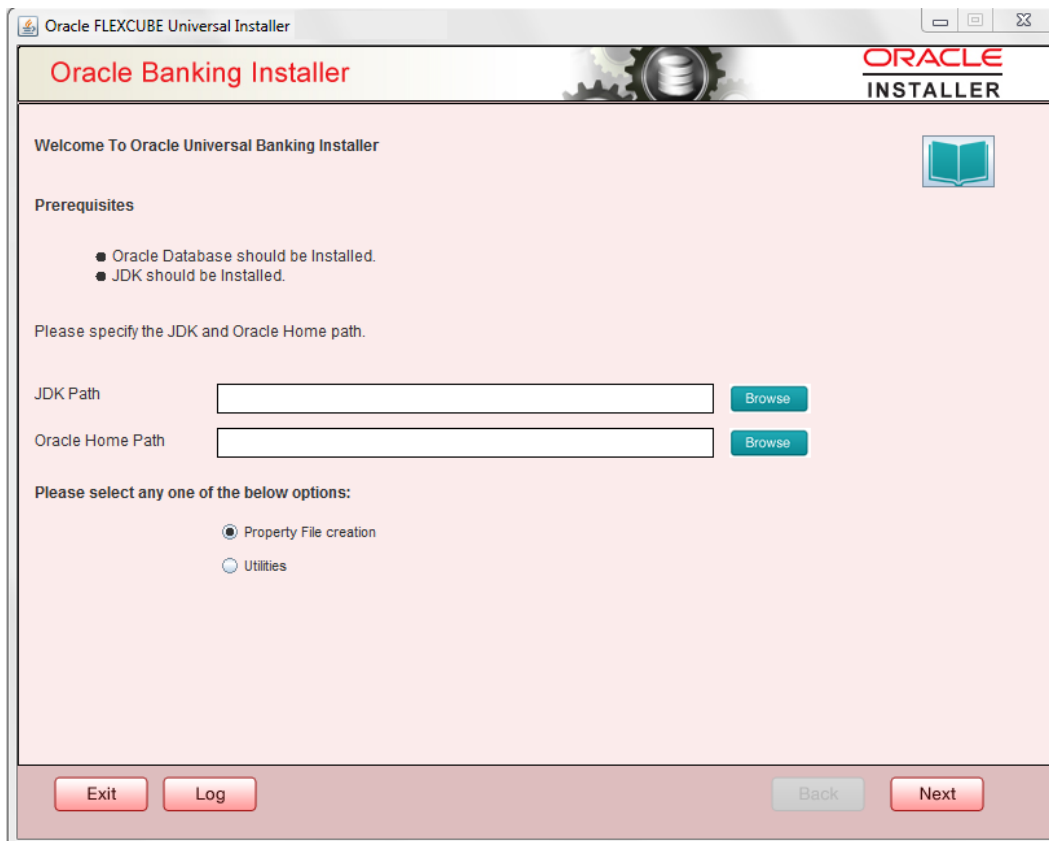
## 1.1 Introduction

This chapter explains the steps to create property file for Standalone Scheduler.

## 1.2 Creating Property File

To create the property file for Oracle FLEXCUBE, follow the steps given below:

1. Launch Oracle FLEXCUBE Universal Banking Solution Installer. Select 'Property File Creation' option and Click 'Next' button.



2. Select 'Scheduler' component and appropriate plugin if needed and click 'Next' button.

Oracle FLEXCUBE Universal Installer

## Oracle Banking Installer

**ORACLE**  
INSTALLER

Select one of the Components

Load Existing Property File

INFRA   
 Scheduler   
 Gateway   
 Switch Interface Installation

Select Oracle Product Processors

Oracle FLEXCUBE Universal Banking  
 Oracle FLEXCUBE Enterprise Limits and Collateral Management   
 Oracle Banking Payments  
 Oracle Banking Corporate Lending   
 Open Development Tool

Select Plugins to be Installed

Branch  Load Existing Branch Property File

Host Address  
 BPEL   
 Scheduler

Reports  
 OFTW   
 FGL   
 ELCM Adapter required

DMS  
 FIS-HOST   
 Insulation

- The below Screen accepts EAR name, Conext Name, Application Server Path, Source Path and EAR Destination path. Enter the valid data and select File Seperator Style and application server from drop down.

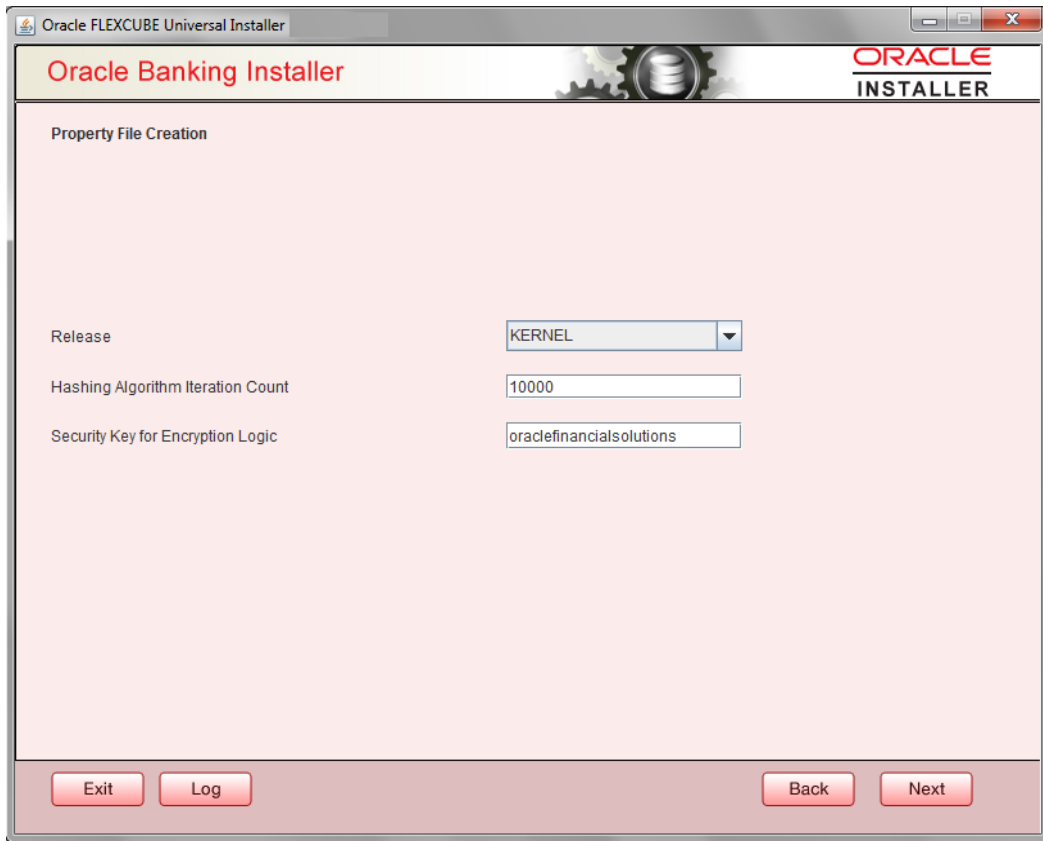


4. Click on 'Next' button to navigate to below Screen.
5. Below shown Screen contains:

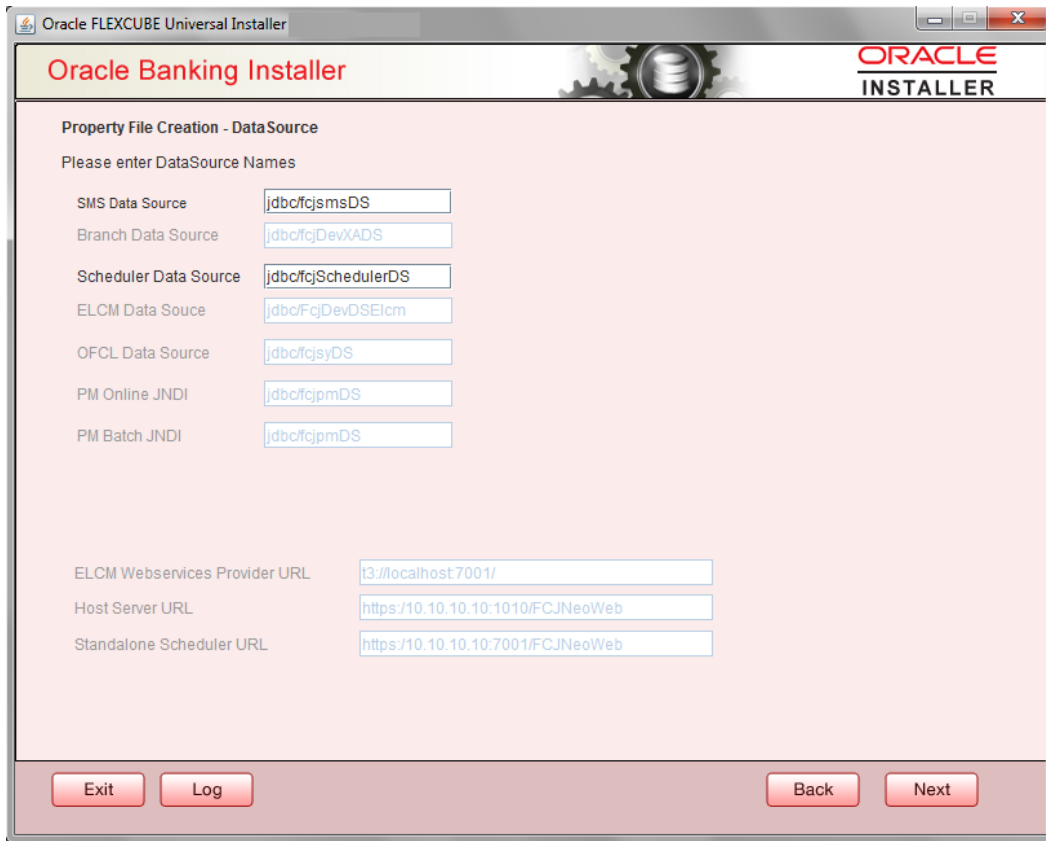
### **Release**

Select the release from the adjoining drop down list.

**Hashing Algorithm Iteration Count** and **Security key for encryption logic** should be entered which will be used for encryption.



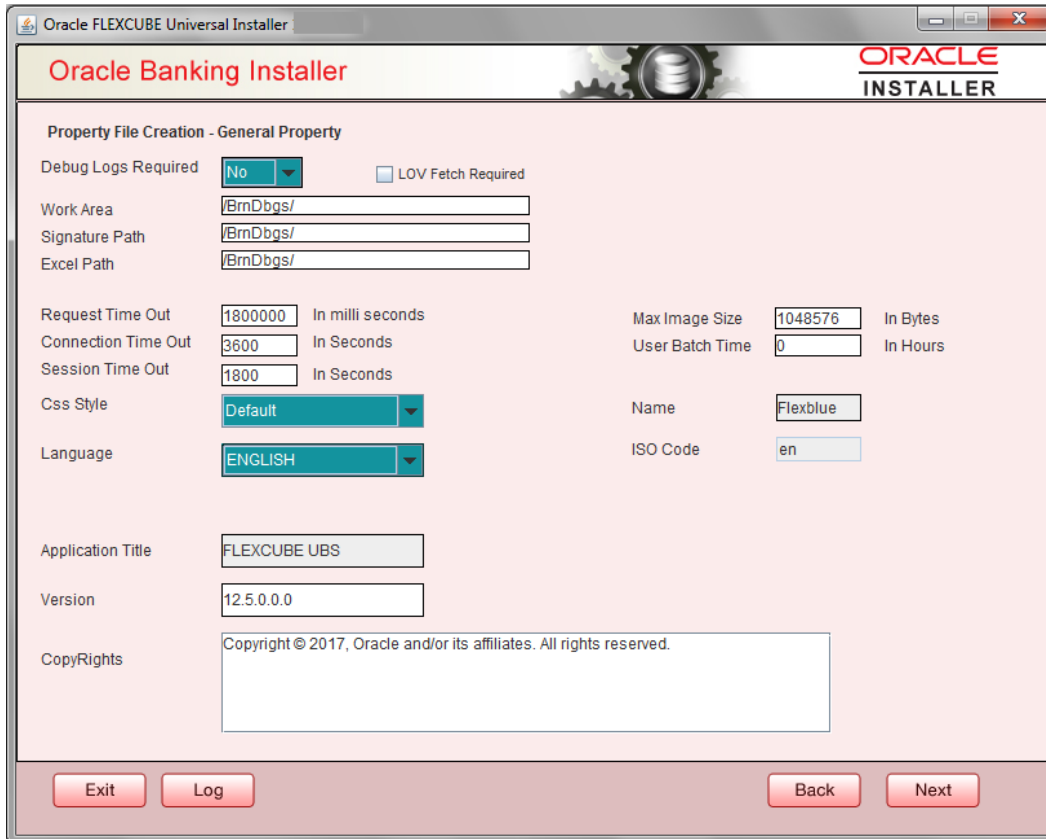
6. Click on 'Next' button to proceed to DataSource Screen.
7. Enter JNDI value for the Datasources enabled and click on Next button.



### 1.2.1 Setting General Properties

This section describes the process of setting common properties of Standalone Installer.

1. The installer displays the 'General Properties' screen.



Specify the following details:

### Debug Logs Required

If you require debug option, select 'Yes' from the drop-down list. If you do not require debug option, select 'No'.

### Work Area

Specify the work area.

For example: D:\BrnDbgs\

### Signature Path

Specify the location at which the signature images are placed.

### Excel Path

Specify the location at which the excel files are generated.

### Request Time Out

Specify the database request timeout value in milli seconds. This is the maximum number of seconds the database waits for a query to return the result.



### **Connection Time Out**

Specify the database connection timeout value in seconds. This is the maximum number of seconds the application waits for a connection to the database to open.

### **Session Time Out**

Enter the session time out value in seconds. This is the maximum number of seconds during which the application gets active without any user intervention. If there is no user intervention continuously for the duration specified here, the user session gets expire.

### **LOV Fetch Required**

If you check this box, the option lists in Oracle FLEXCUBE displays the matching values based on the first characters that you enter in a field. If you specify the first three characters of a value to be entered in an option list and tab out, the system displays the complete list of values that are matching the first three characters.

If you do not check this, option lists does not show the matching values based on the first few characters. You need to specify the complete value against the field.

### **CSS style**

Select Default or Custom from dropdown. By Default CSS Style name will be 'flexblue'.

### **Language**

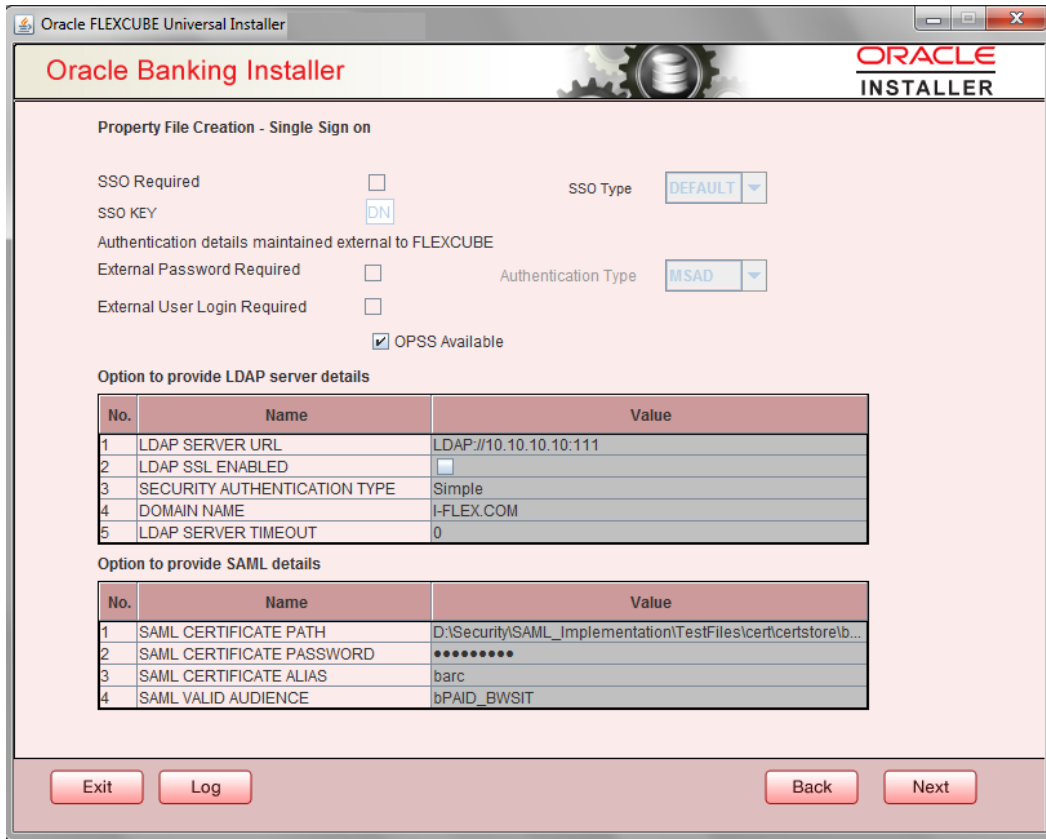
Select language from the dropdown.

Version and Copyright are other general properties.

Click on Next button, once all the property details are entered.

## **1.2.2 Single Sign on**

Only 'OPSS Available' option will be enabled for Scheduler. Select the option if needed.



### 1.2.3 SMTSPS Details

SMPTPS mail configuration is enabled for Scheduler.

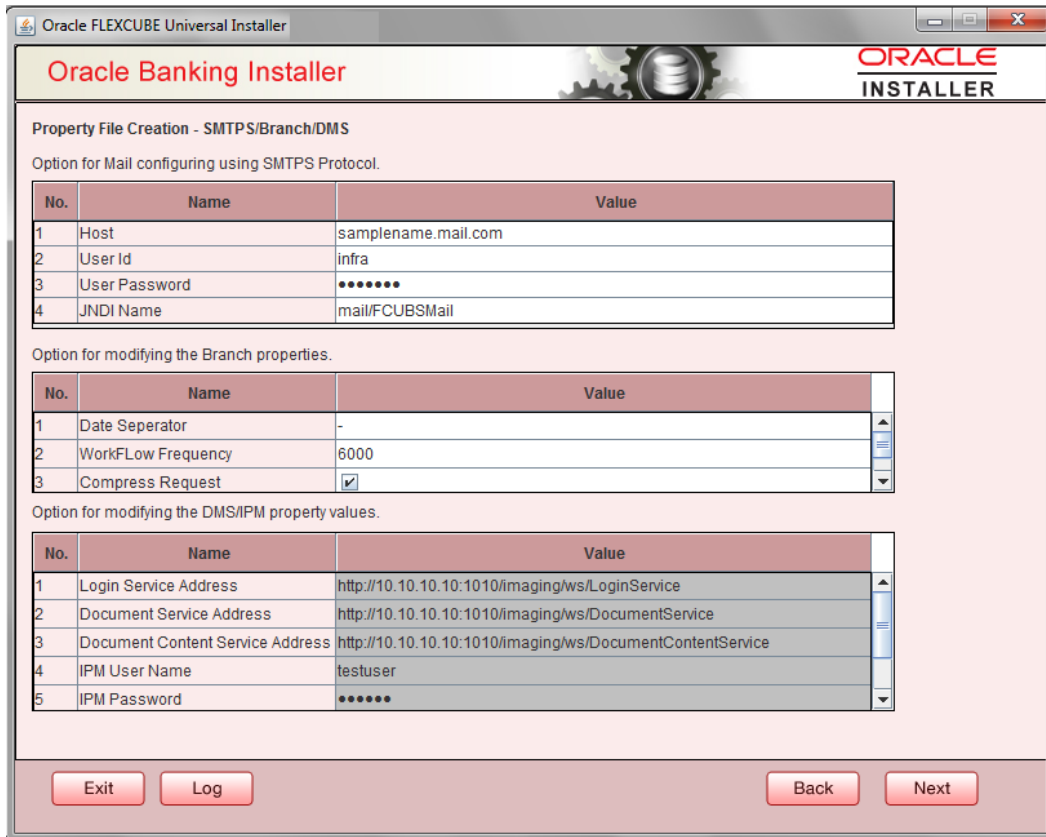
Specify the below details:

Host: Specify the SMTP host name.

User ID: Specify the user ID.

User Password: Specify the user password.

JNDI Name: Specify the JNDI name.



## 1.2.4 Configuring Scheduler Queues

This section describes the method to configure scheduler Queues.

1. System displays the following screen:

### Notify Destination

Specify the notify destination. Select one of the following options:

- QUEUE
- TOPIC

### Queue Name

Set 'NOTIFY\_DEST\_QUEUE' as the destination queue name.

### Queue Connection Factory

Set 'NotifyDestQCF' as the queue connection factory.

### Secure

Check this box to indicate that it is a secured queue connection factory. If you check this box, the caller ID and caller password will be enabled.

### Caller ID

Specify the caller ID for the secured queue connection factory.

### Caller Password

Specify the password for the caller ID to access the secured queue connection factory.



If the queue connection factory is not secured, i.e., if you have not checked the box 'Secure', the installer will not display the fields 'Caller ID' and 'Caller Password'. You need not provide these details in that case.

### Notify Queue Location

Specify the notify queue location. Select one of the following options:

- Internal
- External



For Oracle WebLogic application server, the notify queue location should be selected as 'Internal'.

If you choose 'External' following details for the external queue will be enabled

### Provider URL

Specify the provide URL (iiop://localhost:1010).

1010 is the default IOP port.

Application Server	EMS Out Initial Context Factory
Oracle WebLogic	t3://<ip_adress>:port For example: t3://10.10.10.10:1010 Here, 10.10.10.10 represents the local host and 1010 to the target server default port (AdminServer/ManagedServer).
IBM WebSphere	iiop://<ip_adress>:port For example: iiop://10.10.10.10:1010 Here, 1010 represents the default iiop port

### Security Principal

Specify the login ID to access the application server.

### Security Credentials

Specify the password to access the application server.

Click 'Next' to proceed with scheduler configuration.

### Notify Deffered Queue Name

Set 'DEFERRED\_DEST\_QUEUE' as the notify differed queue name.

### **Deferred Queue Connection Factory**

Set 'DeferredDestQcf' as the deferred queue connection factory.

#### **Secure**

Check this box to indicate that it is a secured deferred queue connection factory. If you check this box, caller ID and caller password will be enabled.

Specify the caller ID and caller password for the secured deferred queue connection factory.

#### **Notify Queue Name**

Set 'NOTIFY\_QUEUE' as the notify queue name.

#### **Dead Letter Queue Name**

Set 'NOTIFY\_QUEUE\_DLQ' as the dead letter queue name.

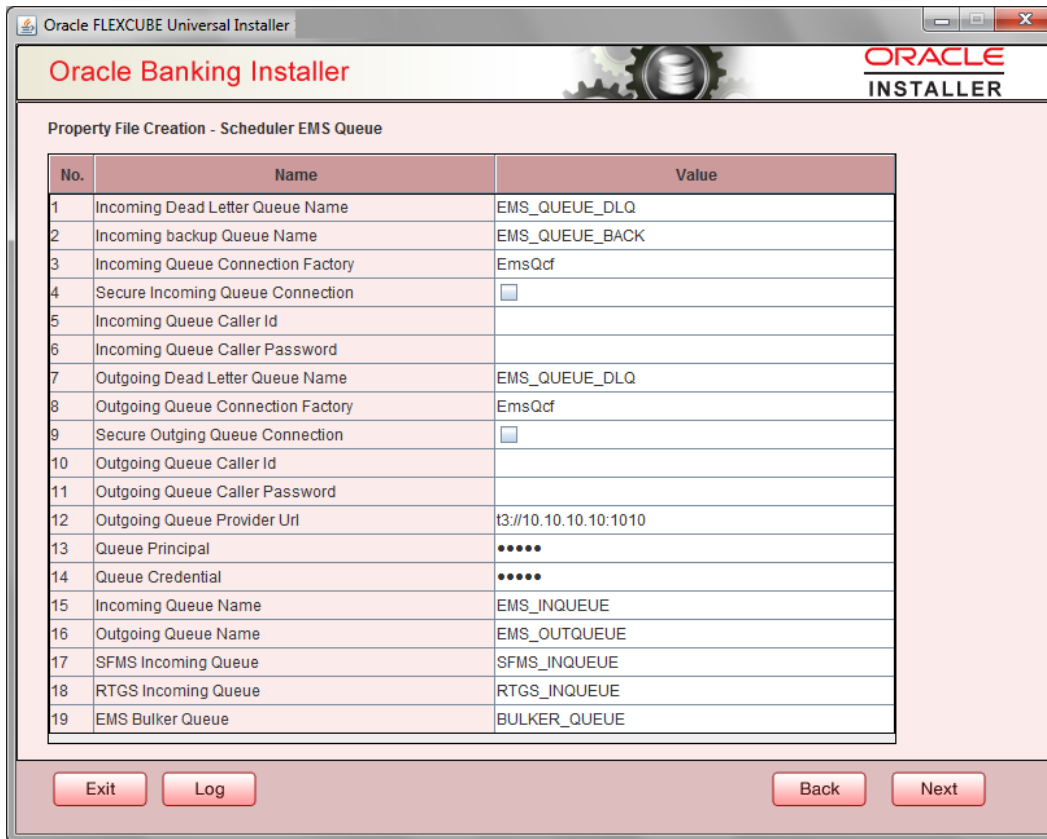
#### **Notify Queue Connection Factory**

Set 'NOTIFY\_MDB\_QCF' as the notify queue connection factory.

#### **Secure**

Check this box to indicate that it is a secured notify internal Queue. If you check this box, caller ID and caller password will be enabled. Specify the caller ID and caller password for the secured notify queue connection factory.

2. Click 'Next' and the following screen is displayed:



Specify the following details:

**Incoming Dead Letter Queue Name**

Set 'EMS\_QUEUE\_DLQ' as the incoming dead letter queue name.

**Incoming Backup Queue Name**

Set 'EMS\_QUEUE\_BACK' as the incoming backup queue name.

**Incoming Queue Connection Factory**

Set 'EmsQcf' as the incoming queue connection factory.

**Secure Incoming Queue Connection**

Check this box to indicate that it is a secured queue connection.

**Incoming Queue Caller ID**

Specify the caller ID for the secured queue connection.

**Incoming Queue Caller Password**

Specify the caller password for the secured queue connection.

**Outgoing Dead Letter Queue Name**

Set 'EMS\_QUEUE\_DLQ' as outgoing dead letter queue name.

**Outgoing Queue Connection Factory**

Set 'EmsQcf' as the outgoing queue connection factory.

**Secure Outgoing Queue Connection**

Check this box to indicate that it is a secured outgoing queue connection.

**Outgoing Queue Caller ID**

Specify the caller ID for the secured queue connection.

**Outgoing Queue Caller Password**

Specify the caller Password for the secured queue connection.

**Outgoing Queue Provider URL**

Specify the URL of the outgoing queue.

**Queue Principal**

Specify the queue principal.

**Queue Credential**

Specify the queue credential.

**Incoming Queue Name**

Specify the incoming queue name.

**Outgoing Queue Name**

Specify the outgoing queue name.

**SFMS Incoming Queue**

Specify the SFMS Incoming Queue.

**RTGS Incoming Queue**

Specify the RTGS incoming Queue.

**EMS Bulker Queue**

Specify the EMS Bulker Queue.

Once you have specified the above details, click 'Next' and system displays the next screen.



## 1.2.5 Setting EMS FTP/FTPS Properties

Oracle FLEXCUBE Universal Installer

**Oracle Banking Installer** ORACLE INSTALLER

Property file Creation - EMS FTP/FTPS  
Option for Scheduler EMS FTP/FTPS configuring.

No.	Name	Value
1	File TransferMode FTPS	FTPS
2	Server	10.10.10.10
3	User id	OFSS
4	Password	.....
5	File Type	.txt
6	Swift Format	1
7	Swift Message Delimiter	<input checked="" type="checkbox"/>
8	Swift Message Terminator	<input checked="" type="checkbox"/>
9	MEDIA	SWIFT

Option for EMS -Structured Financial Messaging System configuration

No.	Name	Value
1	Signature Block	<input checked="" type="checkbox"/>
2	Keystore File Name	/keystore
3	Keystore Alias name	.....
4	Keystore Password	.....

Exit Log Back Next

Specify the following details:

### File Transfer Mode FTPS

Specify the mode of transferring files to EMS. Select one of the following:

- FTPS
- SFTP
- HTTP

### Server

Specify the server IP address for the selected file transfer mode.

### User ID

Specify the user ID to access the server of the file transfer mode.

### Password

Specify the password to for the above user ID.

### File Type

Specify the type of file that is transferred. By default, the Installer sets it as '.txt'.

**SWIFT Message Delimiter**

Select check box if needed.

**SWIFT Message Terminator**

Select check box if needed.

**Media**

Specify the Media

**Signature Block**

Check this box to enable signature block.

**Keystore File Name**

Specify the keystore file name.

**Keystore Alias Name**

Specify the keystore alias name.

**Keystore Password**

Specify the keystore password.

Once you have specified the above details, click 'Next' and system displays the next screen.

**1.2.6 Setting BIP/GI Upload Queue**

This screen describes how to create the property file. Here, you need to set the BIP and BIP Advice report details.

1. System displays the following screen:

Specify the following details

**BIP Queue Name**

Specify the BIP queue name as 'INTERNAL\_BIPREPORT\_QUEUE'.

**BIP DeadLetter Queue Name**

Specify the BIP deadletter queue name as 'INTERNAL\_BIP\_QUEUE\_DLQ'.

**BIPAdvice Queue Name**

Specify the BIP advice queue name as 'INTERNAL\_BIPADVREPORT\_QUEUE'.

**BIPAdvice DeadLetter Queue Name**

Specify the BIP advice dead letter queue name as 'INTERNAL\_BIP\_ADVICE\_QUEUE\_DLQ'.

**Queue Connection Factory**

Specify the queue connection factory as 'BIPQCF'.

**Secure**

Check this box to indicate that it is a secured deferred queue connection factory. The caller ID and caller password will be enabled.

Specify the caller ID and caller password for the secured queue connection factory.

Enter these values for GI Upload Queue.

**Queue Name**

Specify the queue name as 'INTERNAL\_GI\_UPLOAD\_QUEUE'.

**Dead Letter Queue Name**

Specify the dead letter queue name as 'INTERNAL\_GI\_UPLOAD\_DLQ'.

**Queue Connection Factory**

Specify the queue connection factory as 'GI\_UPLOAD\_QCF'.

**Secure**

Check this box to indicate that it is a secured deferred queue connection factory. The caller ID and caller password as shown in the following screen:

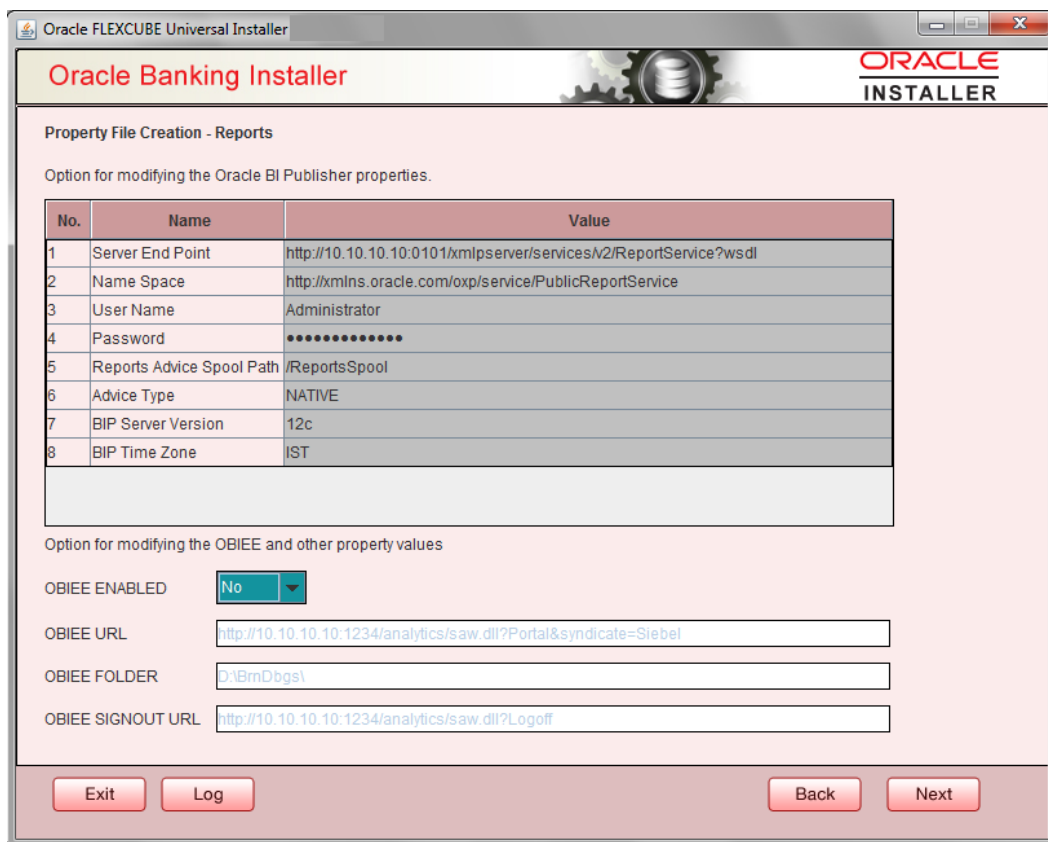
Specify the caller ID and caller password for the secured queue connection factory.

Once you have specified the above details, click 'Next' and system displays the next screen.

**1.2.7 Setting Report Properties**

This section describes the methods to set report properties.

1. System displays the following screen:



Specify the following details:

### **Server End Point**

Specify the BIP end point.

. `http://whf00blq:9502/xmlpserver/services/v2/ReportService?wsdl`

However, you need to change the IP and port where BIP Application is installed. WSDL URL gets modified based on "BIP Server Version" on selecting the required version from the dropdown.

### **Name Space**

Specify the BIP name space.

By default, the installer displays 'http://xmlns.oracle.com/oxp/service/PublicReportService'.

### **User Name**

Specify the BIP user name. By default, the Installer displays 'Administrator'.

### **Password**

Specify the password for the above user name. By default, the Installer sets it as 'Administrator'.

### **Reports Spool Path**

Specify the reports spool path. By default, the Installer displays /ReportsSpool

### **Advice Type**

Specify the advice type. You can choose one of the following:

- NATIVE - This advice type is used for generating advices in text format
- BIP - This advice type is used for generating advices in PDF format.

### **BIP Server Version**

Specify the qualified BIP server version. You can select the appropriate one from the adjoining drop-down list - 10g/11g/12c

### **BIP Time Zone**

Specify the time zone of the BIP server.

If you have selected BPEL Enabled option, then you need to set the BPEL properties.

2. Set the BPEL properties.

Oracle FLEXCUBE Universal Installer

**Oracle Banking Installer** **ORACLE INSTALLER**

**Property File Creation - BPEL**  
Current screen provides an option for modifying the BPEL property values.

No.	Name	Value
1	Factory Initial	weblogic.jndi.WLInitialContextFactory
2	Provide Url	t3://10.10.10.10:0101?partitionName=DOMAIN
3	Security Principal	oc4jadmin
4	Security Credentials	*****
5	Soa Partition Name	default
6	Domain Password	*****
7	Dedicated Connection	<input checked="" type="checkbox"/>
8	BPEL Realm Name	jazn.com
9	WorkFlow Client Type	REMOTE
10	BAM URI	http://10.10.10.10:1001/OracleBAM/16734
11	BPM INSTALLED	<input type="checkbox"/>
12	External Node Required	YES

No.	Name	Value
1	BI User	*****
2	BI Password	*****

Exit Log Back Next

Specify the following details:

**Factory Initial**

Specify the factory initial.

**Provider URL**

Specify the URL of the server. Enter the IP address, target server port (AdminServer/ManagedServer) and the context root.

**Security Principal**

Specify the user name to access the application server where BPEL is installed.

**Security Credential**

Specify the password for the above user name.

**Soa Partition Name**

Specify the Soa Server Name. By default it will be the Installer sets it to 'default'.

**Domain Password**

Specify the domain password for which SOA server is extended

**Dedicated Connection**

Check this box to indicate that this connection is not used for other purposes.

**BPEL Realm Name**

Specify the BPEL realm name.

**BAM URI**

Specify the BAM URI.

**BPM Installed**

Check this box if the BPM is installed.

**BI User**

Specify the BI user.

**BI Password**

Specify the password for BI user.

**External Alerts Required**

Check this box to enable External Alerts Required.

**Enabling Load Balance**

Check this box to enable BPEL load balance.

**Frequency**

Specify the balance load frequency.

**Task Counts**

Specify the balance load task count.

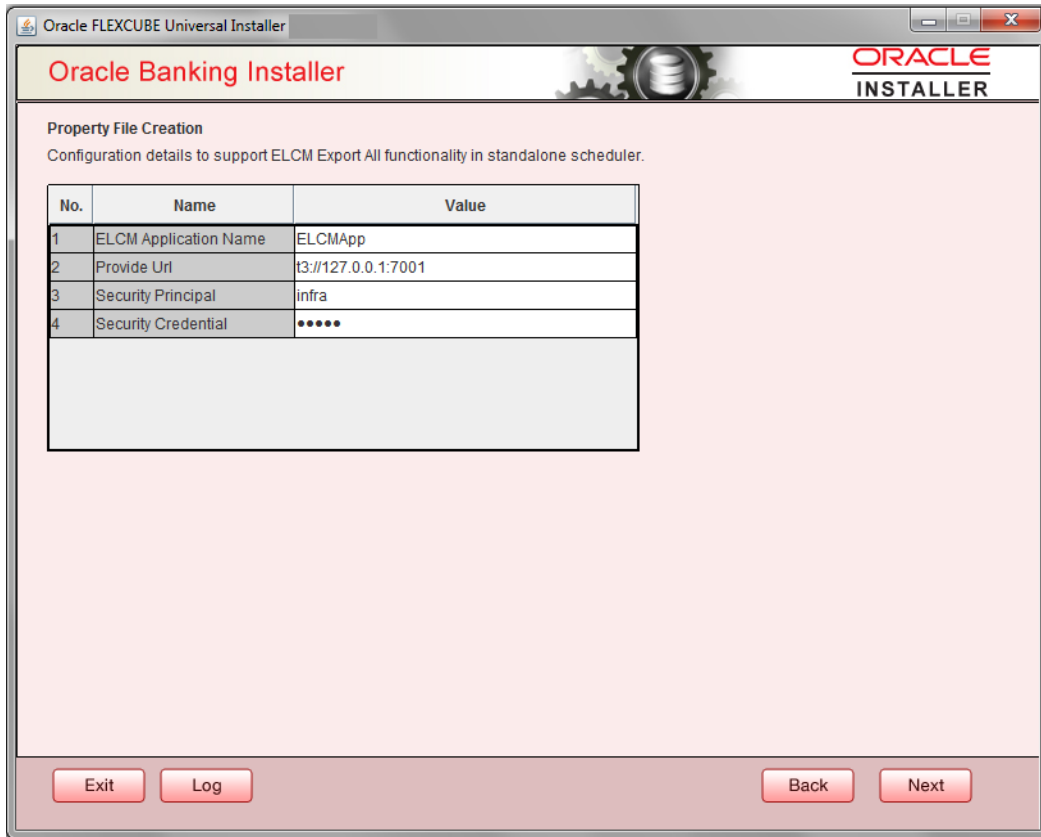
**Cut-off Time**

Specify the balance load cut-off time.

Once you have specified the above details, click 'Next' and system displays the next screen.

**1.2.8 Setting ELCM Properties**

If you have selected ELCM required option, then you need to set the ELCM properties.



### **ELCM Application Name**

Specify the ELCM application Name.

### **Provide URL**

Specify the provide URL

### **Security Principal**

Specify the login ID to access the application server.

### **Security Credentials**

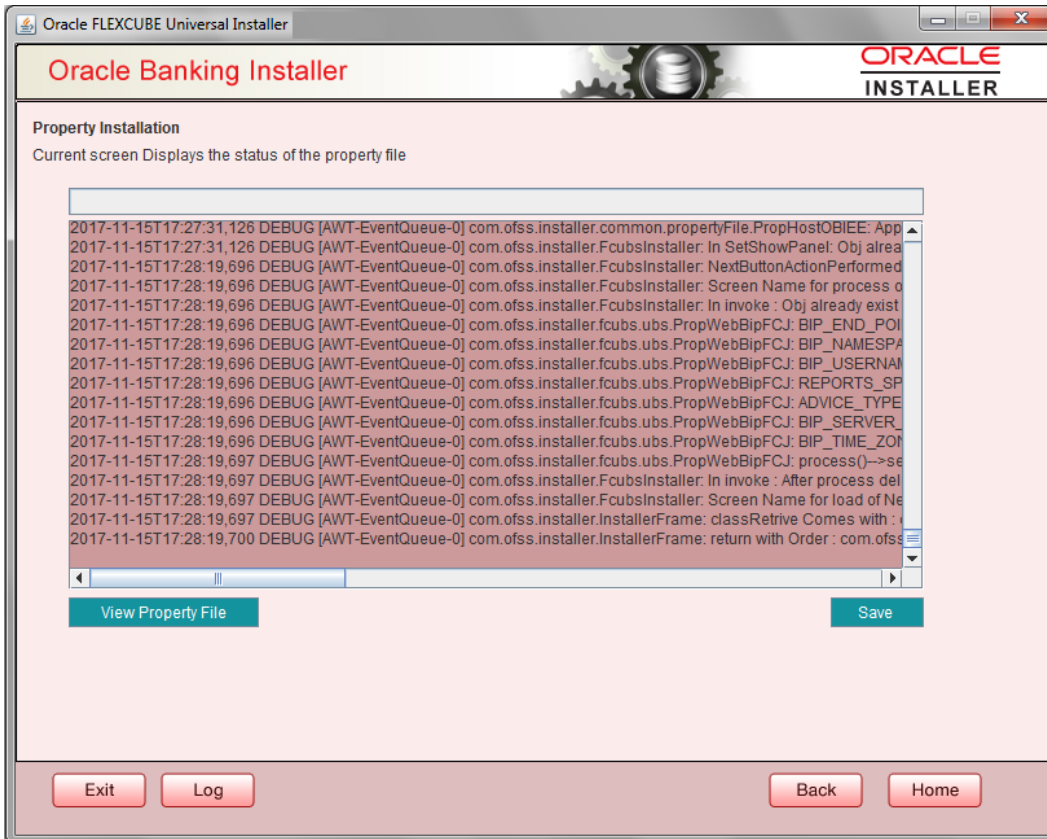
Specify the password to access the application server.

## **1.2.9 Saving Property File**

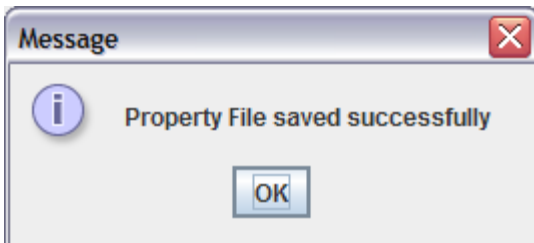
After completing all the required settings explained above, you need to save the property file.

1. Save the property file.



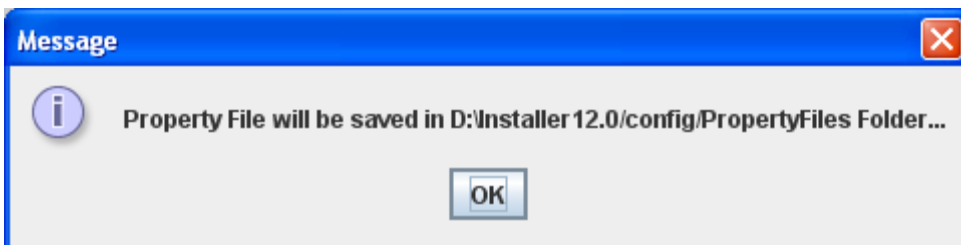


2. You can view the status of property file creation in the above screen. Once the file is saved, the installer displays the following message:



Two property files: fcubs.properties and scheduler.properties are saved.

3. If you do not use the 'Save' or Save As' buttons, the installer will save the properties file in '<InstallerSources>\config\PropertyFiles' folder. In that case, you will see the message below.



This completes the properties file creation.



Standalone Scheduler Property File Creation  
[November] [2020]  
Version 14.4.0.2.0

Oracle Financial Services Software Limited  
Oracle Park  
Off Western Express Highway  
Goregaon (East)  
Mumbai, Maharashtra 400 063  
India

Worldwide Inquiries:  
Phone: +91 22 6718 3000  
Fax: +91 22 6718 3001  
<https://www.oracle.com/industries/financial-services/index.html>

Copyright © [2007], [2020], Oracle and/or its affiliates. All rights reserved.

Oracle and Java are registered trademarks of Oracle and/or its affiliates. Other names may be trademarks of their respective owners.

**U.S. GOVERNMENT END USERS:** Oracle programs, including any operating system, integrated software, any programs installed on the hardware, and/or documentation, delivered to U.S. Government end users are "commercial computer software" pursuant to the applicable Federal Acquisition Regulation and agency-specific supplemental regulations. As such, use, duplication, disclosure, modification, and adaptation of the programs, including any operating system, integrated software, any programs installed on the hardware, and/or documentation, shall be subject to license terms and license restrictions applicable to the programs. No other rights are granted to the U.S. Government.

This software or hardware is developed for general use in a variety of information management applications. It is not developed or intended for use in any inherently dangerous applications, including applications that may create a risk of personal injury. If you use this software or hardware in dangerous applications, then you shall be responsible to take all appropriate failsafe, backup, redundancy, and other measures to ensure its safe use. Oracle Corporation and its affiliates disclaim any liability for any damages caused by use of this software or hardware in dangerous applications.

This software and related documentation are provided under a license agreement containing restrictions on use and disclosure and are protected by intellectual property laws. Except as expressly permitted in your license agreement or allowed by law, you may not use, copy, reproduce, translate, broadcast, modify, license, transmit, distribute, exhibit, perform, publish or display any part, in any form, or by any means. Reverse engineering, disassembly, or decompilation of this software, unless required by law for interoperability, is prohibited.

The information contained herein is subject to change without notice and is not warranted to be error-free. If you find any errors, please report them to us in writing.

This software or hardware and documentation may provide access to or information on content, products and services from third parties. Oracle Corporation and its affiliates are not responsible for and expressly disclaim all warranties of any kind with respect to third-party content, products, and services. Oracle Corporation and its affiliates will not be responsible for any loss, costs, or damages incurred due to your access to or use of third-party content, products, or services.